

**TABLE OF ORGANIZATION
ECHO COMPANY 23 BATTALION
BLACKHORSE BRIGADE
GEORGE WASHINGTON DIVISION
VIRGINIA DEFENSE FORCE**

This publication is formatted to match form of the United States Marine Corps Table of Manpower Requirements. It provides the Mission, Structure, Deployment, and Standard of Operations for Echo Company, 23 Battalion, Blackhorse Brigade, and is tailored for VDF use. The procedures apply unless the Commander makes a decision to deviate from them based on the factors of METT-T. In such a case, the exception applies only to the particular situation for which the Commander made the decision.

Areas marked in red require additional information to complete the section. Document content is subject to change pending final revisions, and approval. Final version estimated to be complete February 2009. After that date, any changes will be made through the revision and re-issue process.

2LT HEATHER D WELSH
EXECUTIVE OFFICER
ECHO COMPANY
23 BN, BLACKHORSE BRIGADE

**TABLE OF ORGANIZATION
ECHO COMPANY 23D BATTALION, BLACKHORSE BRIGADE
VIRGINIA DEFENSE FORCE**

1. PROMULGATION STATEMENT. THIS TABLE OF ORGANIZATION PROSCRIBES THE ORGANIZATIONAL STRUCTURE, MISSION, TASKS, TRAINING, BILLET AUTHORIZATION, PERSONNEL STRENGTH, AND AUTHORIZED INDIVIDUAL EQUIPMENT FOR ECHO COMPANY (E/23), 23D BATTALION (BN), BLACKHORSE BRIGADE (BHB), GEORGE WASHINGTON DIVISION (DIV) OF THE VIRGINIA DEFENSE FORCE (VDF).

2. ORGANIZATION

HEADQUARTERS SECTION
PLATOONS (3)
SQUADS (6)

3. MISSION AND TASKS

A. MISSION. TO PROVIDE A WELL TRAINED, LIGHT INFANTRY FORCE PROVIDING COMMUNICATIONS, SECURITY, AND SEARCH AND RESCUE TEAMS FOR 23 BN COMMAND OPERATIONS, AND OTHER COMMANDS AS DIRECTED.

B. UNIT TASKS

(1) SECURITY

(a) EVACUATION COORDINATION TEAMS. PROVIDE FORCE PROTECTION PERSONNEL AS ORDERED BY BN COMMAND DURING EVACUATION OPERATIONS TO ASSIST POPULATION DISPLACEMENT.

(b) QUICK REACTION FORCE (QRF). DURING OPERATIONS, PROVIDE MOBILE SECURITY, SURVEILLANCE AND PATROLS FOR USE IN SUPPORT OF BN OPERATIONS AT THE DIRECTION OF BN.

(c) LESS THAN LETHAL FORCE. PROVIDE LESS THAN LETHAL FORCE PROTECTION FOR VDF AND JOINT VIRGINIA NATIONAL GUARD MISSIONS, INCLUDING MILITARY ASSISTANCE TO CIVILIAN DISTURBANCE (MACDIS).

(2) SEARCH AND RESCUE

(a) WILDERNESS SEARCH AND RESCUE TEAMS. PROVIDE LEVEL III NIMS COMPLIANT SEARCH AND RESCUE TEAMS FOR WILDERNESS ENVIRONMENTS

(b) WILDERNESS SEARCH SUPPORT UNIT. PROVIDE COMMAND POST OPERATIONS TO MONITOR AND SUPPORT S&R TEAMS OPERATIONS AND COMMUNICATE REPORTS TO HHQ.

(c) MEDICAL TRIAGE. BASIC MEDICAL TREATMENT FOR SOLDIER CARE AND EMERGENCY WILDERNESS EVACUATIONS

(3) COMMUNICATIONS

(a) MOBILE COMMUNICATIONS PLATFORM (MCP) TEAMS. PROVIDE RAPID RESPONSE TEAMS TO DEPLOY, ESTABLISH AND OPERATE MCP COMMAND POST VHF COMMUNICATION EQUIPMENT FOR STATE ACTIVE DUTY DEPLOYMENTS AND OTHER MCP MISSIONS AS ASSIGNED.

(b) COMPANY LEVEL MISSION COMMUNICATIONS. PROVIDE COMPANY LEVEL COMMUNICATIONS DURING MISSIONS TO SUSTAIN AND SUPPORT OPERATIONS, AND PROVIDE SOLDIER ACCOUNTABILITY DURING MISSIONS.

(c) BATTALION LEVEL COMMUNICATIONS. PROVIDE BN LEVEL COMMUNICATIONS FROM COMPANY HQ TO BN DURING MULTI UNIT MISSIONS AND OPERATIONS IN ACCORDANCE WITH VDF COMMUNICATIONS PROTOCOLS.

C. INDIVIDUAL TASKS. EACH E/23 SOLDIER WILL TRAIN TO SPECIALIZE IN A PRIMARY MILITARY OCCUPATIONAL SPECIALTY OF SECURITY, MEDICAL, OR COMMUNICATIONS, AND BE ABLE TO PERFORM A SECONDARY MOS OF OPERATIONS, LOGISTICS, ADMINISTRATION IN SUPPORT OF COMPANY MISSIONS AND OPERATIONS.

(1) **SECURITY/SEARCH & RESCUE.** PROVIDE BASIC SECURITY DURING MISSIONS AND FUNCTIONS AS SECURITY SOLDIERS ON CHECK POINTS, PATROLS, TRAFFIC CONTROL POINTS AND ACCESS CONTROL AREAS. SEARCH PERSONNEL ARE TRAINED IN TRACKING, WILDERNESS SURVIVAL, AND SEARCH TECHNIQUES.

(2) **MEDICAL.** PROVIDE BASIC SOLDIER CARE TO VDF SOLDIERS AND FIRST AID TO SEARCH AND RESCUE VICTIMS. PERFORMS PRE-MISSION MEDICAL SCREENINGS AND POST DEPLOYMENT HEALTH CHECKS.

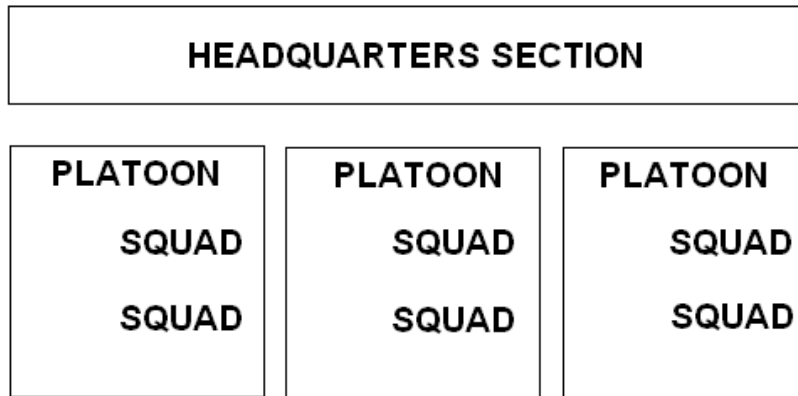
(3) **COMMUNICATIONS.** DEPLOYS, ESTABLISHES AND OPERATES COMPANY COMMAND POST EQUIPMENT OR MCP COMMUNICATION EQUIPMENT; MAINTAINS STATUS BOARDS, MISSION LOGS AND MISSION REPORTS. COMMUNICATIONS TEAMS SEND REPORTS TO HHQ.

(4) **OPERATIONS.** PLANS, PREPARES AND EXECUTES COMPANY, PLATOON AND SQUAD LEVEL MISSIONS AS ASSIGNED BY HIGHER HQ, INCLUDING CREATION OF WARNING ORDERS, OPLANS AND OPORDS.

(5) **LOGISTICS.** EVALUATES, MAINTAINS, AND ORGANIZES TRANSPORT OF SUPPLIES, PERSONNEL AND EQUIPMENT REQUIRED FOR COMPANY, PLATOON AND SQUAD LEVEL MISSIONS.

(6) **ADMINISTRATION.** EXECUTES THE ADMINISTRATIVE DUTIES OF COMPANY LEVEL OPERATIONS, INCLUDING MORNING REPORTS, SITUATION REPORTS, AFTER ACTION REPORTS, INCIDENT REPORTS, PERSONNEL ACTIONS, AND UNIT TRAINING SCHEDULES.

4. UNIT ORGANIZATION. E/23 IS ORGANIZED INTO A HEADQUARTERS SECTION, AND THREE PLATOONS. THE MINIMUM MISSION STAFF FOR THE HEADQUARTERS SECTION CONSISTS OF: THE COMPANY COMMANDER (CO) OR OFFICER IN CHARGE (OIC), COMPANY 1ST SERGEANT (1SGT) OR NONCOMMISSIONED OFFICER IN CHARGE (NCOIC) AND RADIO TELEPHONE OPERATION (RTO). EACH PLATOON WILL CONSIST OF A PLATOON LEADER (PLTLDR), PLATOON SERGEANT (PLTSGT), TWO SQUAD LEADERS (SQLDR) , FOUR TEAM LEADERS (TL) AND EIGHT ENLISTED GUARDS. EACH PLATOON IS ORGANIZED INTO TWO SQUADS PERMITTING THE ATTACHMENT OR DETACHMENT OF SQUADS TO SEPARATE SUPPORTED TASKS. PRIMARY SQUAD CONSISTS OF THE PLATOON LEADER, ONE SQUAD LEADER, TWO TEAM LEADERS AND FOUR SOLDIERS. THE SECONDARY SQUAD IS FORMED BY THE PLTSGT, ONE SQUAD LEADER, TWO TEAM LEADERS AND FOUR SOLDIERS.



A. COMMAND AND CONTROL

- (1) **COMMAND AND CONTROL.** E/23 CO EXERCISES COMMAND OF THE COMPANY THROUGH THE XO, 1SG, PLTLDRS AND PLTSGTS.
 - A) IN GARRISON THE COMMANDER OF E/23 IS BN COMMANDER, 23D BN, THROUGH E/23 CO.
 - B) DURING 23 BN OPERATIONS THE S3 EXERCISES COMMAND OF E/23 THROUGH THE E/23 CO OR OIC.
 - C) WHEN OPCONNED TO COMMAND OTHER THAN 23 BN, OPERATIONAL CONTROL WILL BE COMMAND ELEMENT OF OPCON FORCE THROUGH THE E/23 CO OR OIC.

- (2) **COMMUNICATIONS.** COMPANY LEVEL COMMUNICATIONS ARE PROVIDED BY COMPANY RTO AS E/23 BASE AND INDIVIDUAL SOLDIERS FROM E/23 PLATOONS AS ALTERNATE RTOS. ALL E/23 SOLDIERS WILL BE CAPABLE OF MAINTAINING ORGANIC COMPANY LEVEL COMMUNICATIONS FOR SECURITY AND MEDICAL MISSIONS. SEE COMMUNICATIONS SOP FOR COMPANY LEVEL COMMUNICATIONS PROCEDURES.

- A) STANDARD COMPANY LEVEL COMMUNICATIONS WILL BE VIA COMPANY NET ON FRS RADIO. CHANNELS DETERMINED BY E/23 CO OR HHQ.
 - (1) PRIMARY COMMAND POST FOR E/23 DURING COMPANY LEVEL OPERATIONS WILL BE ESTABLISHED BY E/23 HQ SECTION.
 - (2) COMMAND POST DURING COM OPS WILL BE MCP COMMAND VEHICLE.

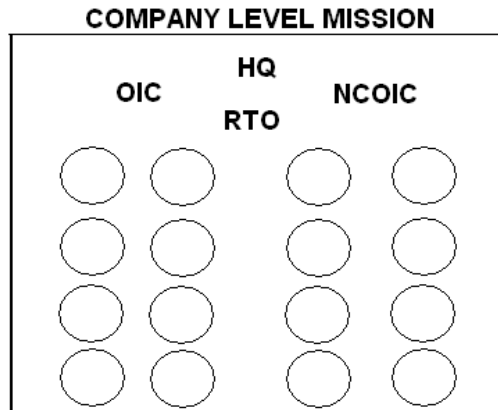
- B) STANDARD COMPANY EXTERNAL COMMUNICATIONS WILL BE VIA BN NET ON MURS RADIO. CHANNELS DETERMINED BY BN HQ.

B. **MOBILITY.** THE BASIC MEANS OF GROUND MOBILITY FOR THE COMPANY IS PROVIDED BY ORGANIC VEHICULAR ASSETS (POV).

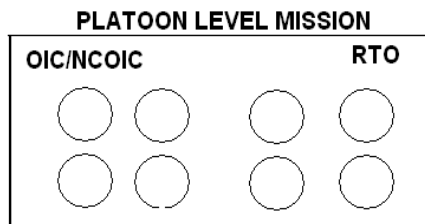
5. CONCEPT OF EMPLOYMENT

A. STANDARD MISSION DEPLOYMENT: FOR STANDARD SECURITY OR COMMUNICATION MISSIONS, E/23 HAS THE CAPABILITY TO SIMULTANEOUSLY SUPPORT FOUR SQUAD LEVEL MISSIONS, OR TWO PLATOON LEVEL MISSIONS FOR A LIMITED PERIOD OF 24 HOURS. E/23 HAS THE CAPABILITY TO SUPPORT 2 SQUAD LEVEL MISSIONS, ONE PLATOON LEVEL MISSION OR ONE COMPANY MISSION FOR A PERIOD OF 72 HOURS. THIS CAPABILITY WILL BE TASK-ORGANIZED AS FOLLOWS:

- (1) COMPANY LEVEL MISSIONS REQUIRE MINIMUM PERSONNEL OF OIC, NCOIC, RTO AND 16 SOLDIERS.

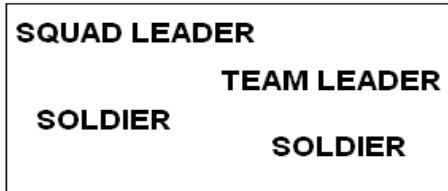


- (2) PLATOONS LEVEL MISSION WILL REQUIRE MINIMUM PERSONNEL OF OIC/NCOIC, RTO AND 8 SOLDIERS.



(3) SQUAD LEVEL MISSION WILL REQUIRE MINIMUM PERSONNEL OF SQUAD LEADER, TEAM LEADER AND 2 SOLDIERS.

SQUAD LEVEL DEPLOYMENT



B. SEARCH AND RESCUE DEPLOYMENTS: E/23 HAS THE CAPABILITY TO DEPLOY 2 SEARCH TEAMS FOR 3 DAYS WITH 24-HOUR HQ ELEMENT. E/23 HAS THE ABILITY TO DEPLOY 4 SEARCH TEAMS FOR 7 DAYS WITH 24-HOUR HQ ELEMENT.

- (1) **SEARCH AND RESCUE TEAM (S&R):** E/23 S&R TEAMS ARE MADE UP OF TWO SQUAD-SIZED UNITS CONSISTING OF 2 S&R TEAM LEADERS AND 6 SOLDIERS.
- (2) **SEARCH AND RESCUE SUPPORT TEAM (S&RS):** THE S&RS CONSISTS OF AN OIC OR NCOIC, RTO, AND RECORDER. WITH RELIEF SOLDIERS FOR EACH POSITION, THE TOTAL HQ STAFF FOR 24 HOUR OPERATIONS IS 8 SOLDIERS.

C. TACTICAL EMPLOYMENT: E/23 IS TACTICALLY EMPLOYED BY THE BN HQ, OFFICER-IN-CHARGE UNDER THE STAFF COGNIZANCE OF THE S-3.

D. REMAIN BEHIND ELEMENT (RBE): DURING E/23 PLATOON OR SQUAD LEVEL DEPLOYMENTS, COMPANY ESTABLISHES RBE TO PROVIDE REACH BACK SUPPORT, ORDERS, SITREPS, RESUPPLY AND RELIEF TO UNITS IN FIELD. RBE CONSISTS OF OIC, NCOIC, LOGISTIC SUPPORT AND ADMIN SUPPORT.

6. ADMINISTRATIVE CAPABILITIES. ADMINISTRATIVE SUPPORT OF PERSONNEL FUNCTIONS IS PROVIDED BY E/23 HQ SECTION: 1SG, TRAINING NCO, ADMIN SERVICES NCO AND ADMIN SERVICES ASSISTANT. PERSONNEL ACTIONS ARE PROCESSED THROUGH BN S1 TO G-1, WITH COPIES TO THE CO/XO AND 1SG.

7. LOGISTIC CAPABILITIES

A. MAINTENANCE. E/23 IS CAPABLE OF 1ST ECHELON MAINTENANCE ON ORGANIC EQUIPMENT. MAINTENANCE IS SUPERVISED BY THE LOGISTICS NCO.

B. SUPPLY. E/23 IS CAPABLE OF 1ST ECHELON MISSION SUPPLY. RESUPPLY OF E/23 IS PROVIDED BY HHC, 23 BN, OR OPCON COMMAND, COORDINATED BY THE LOGISTICS NCO.

C. TRANSPORTATION. E/23 IS CAPABLE OF PROVIDING SUFFICIENT ORGANIC MOTOR TRANSPORTATION (POV) TO MOVE THE COMPANY THROUGHOUT THE BATTALION AREA OF RESPONSIBILITY.

D. MEDICAL. BASIC SOLDIER CARE IS PROVIDED BY COMPANY LEVEL MEDICAL NCO. COORDINATION WITH EMS FOR MEDICAL EVAC WILL BE HANDLED THROUGH MISSION HQ OR EMS CONTACT POINT.

E. RATIONS. 72-HOUR MEAL SUPPLY IS PROVIDED BY INDIVIDUAL E/23 SOLDIERS. ADDITIONAL MEAL SUPPORT IS PROVIDED BY HHC, 23 BN OR OPCON COMMAND COORDINATED BY LOGISTICS NCO.

8. TRAINING

A. DRILL LOCATION.

- (1) E/23 HOME ARMORY IS MANASSAS, VA.
- (2) ADDITIONALLY E/23 WILL DRILL JOINTLY WITH OTHER 23 BN COMPANIES TWICE DURING THE TRAINING YEAR.

B. TRAINING SCHEDULE.

- (1) E/23 REGULAR TRAINING WILL BE ONE SATURDAY A MONTH FROM 0700 – 1600. VOLUNTARY PT BEGINS AT 0600.
- (2) ANNUAL TRAINING WILL BE A THREE-DAY WEEKEND IN THE FALL AT FT PICKETT.
- (3) BRIGADE MULTI UNIT TRAINING EXERCISE (MUTA) IS A TWO-DAY EXERCISE IN MAY.
- (4) ADDITIONAL TRAINING DRILLS MAY BE ADDED AS ALTERNATE DRILL EVENTS.

C. MISSION ESSENTIAL TASK LIST (METL).

- (1) LESS THAN LETHAL FORCE
- (2) SEARCH AND RESCUE OPERATIONS
- (3) CHECKPOINT AND AREA SECURITY
- (4) COMMUNICATIONS (FRS, GMRS, MURS, VHF, UHF)

D. TRAINING QUALIFICATIONS.

(1) **SECURITY.** SOLDIERS WILL TRAIN TO VDF STANDARD ON LESS THAN LETHAL FORCE EQUIPMENT AND PASS QUALIFICATION TEST BEFORE BEING AUTHORIZED FOR MISSION USE. QUALIFICATIONS WILL BE DOCUMENTED IN SECURITY QUALIFICATION ANNEX.

(2) **SEARCH AND RESCUE.** SOLDIERS WILL TRAIN TO FEMA AND VDF STANDARD ON S&R SKILLS AND WILL PASS QUALIFICATION TEST BEFORE BEING AUTHORIZED FOR MISSION ASSIGNMENT. QUALIFICATIONS WILL BE DOCUMENTED IN SEARCH AND RESCUE QUALIFICATION ANNEX.

(3) **COMMUNICATIONS.** SOLDIERS WILL TRAIN TO VDF STANDARD ON COM SKILLS AND WILL PASS QUALIFICATION TEST BEFORE BEING AUTHORIZED FOR MISSION ASSIGNMENT. QUALIFICATIONS WILL BE DOCUMENTED IN COMMUNICATIONS QUALIFICATION ANNEX.

(4) **MEDICAL.** SOLDIERS WILL TRAIN TO FEMA AND VDF STANDARD ON FIRST AID SKILLS AND WILL PASS QUALIFICATION TEST BEFORE BEING AUTHORIZED FOR MISSION ASSIGNMENT. QUALIFICATIONS WILL BE DOCUMENTED IN MEDICAL QUALIFICATION ANNEX.

9. EQUIPMENT REQUIREMENTS

A. **PERSONAL PROTECTIVE EQUIPMENT (PPE):** THESE ITEMS CONSTITUTE E/23 BASIC LOAD IN ADDITION TO THE SOLDIER'S STANDARD 72-HOUR LOAD.

(1) SECURITY EQUIPMENT

- a) KEVLAR BALLISTIC HELMET
- b) TACTICAL KNEE AND ELBOW PADS
- c) PADDED KNUCKLE GLOVES
- d) PR-24 (36" WOOD RIOT BATON)
- e) BALLISTIC GLASSES

(2) SEARCH AND RESCUE EQUIPMENT

- a) HELMET
- b) RAPPELLING ROPE 1/2" x 150
- c) LOCKING CARABINEERS
- d) STRETCHER
- e) FIELD FIRST AID KIT
- f) HEADLAMPS

(3) SEARCH SUPPORT EQUIPMENT

- a) MAPS
- b) RADIO DETECTION EQUIPMENT

B. COMMUNICATIONS EQUIPMENT

(1) **FRS RADIO.** EACH SOLDIER WILL CARRY AN FRS RADIO FOR TACTICAL COMPANY NET COMMUNICATIONS DURING TRAINING AND OPERATIONS.

(2) **MURS RADIO.** MULTI USE RADIO SERVICE (MURS) RADIOS WILL BE ISSUED TO COMPANY CP, OIC, AND NCOIC AS NEEDED BY 23 BN HQ.

(3) **VHF RADIO.** VERY HIGH FREQUENCY RADIO EQUIPMENT WILL BE ISSUED BY BRIGADE COMMAND AS REQUIRED.

C. COMMAND POST EQUIPMENT

- (1.) AO MAP
- (2.) VHF RADIO
- (3.) STATUS BOARD

10. **PERSONNEL:** E/23 HAS 59 BILLETS FOR SOLDIERS, THOUGH THE NUMBER PERSONNEL ASSIGNED TO E/23 MAY BE INCREASED OR DECREASED BY BN COMMANDER.

A. COMPANY MANNING TABLE OF ORGANIZATION (MTO)

HQ Section			Title	Auth
23600	201	01	Company Commander	O3
323601	201	02	Executive Officer	O2
323602	201	03	First Sergeant	E8
323603	201	04	Training NCO	E6
323604	201	05	Logistics NCO	E6
323605	201	06	Medical NCO	E6
323606	201	07	Admin Svcs Sgt	E5
323607	201	06	RTO	E4
323608	201	09	Admin Asst	E4
323609	201	10	Logistics Asst	E4
323699	201	13	Cook	E4
Co E, First Platoon:				
323610	202	01	Platoon Leader	O-2

DRAFT

323611	202	02	Platoon Sgt	E7
323612	202	03	Squad Leader	E6
323613	202	03	Squad Leader	E6
323615	202	04	Team Leader	E5
323616	202	04	Team Leader	E5
323617	202	04	Team Leader	E5
323618	202	04	Team Leader	E5
323624	202	05	Volunteer	E4
323625	202	05	Volunteer	E4
323626	202	05	Volunteer	E4
323627	202	05	Volunteer	E4
323628	202	05	Volunteer	E4
323629	202	05	Volunteer	E4
323630	202	05	Volunteer	E4
323631	202	05	Volunteer	E4
Co E, Second Platoon:				
323642	203	01	Platoon Leader	O2
323643	203	02	Platoon Sgt	E7
323644	203	03	Squad Leader	E6
323645	203	03	Squad Leader	E6
323647	203	04	Team Leader	E5
323648	203	04	Team Leader	E5
323649	203	04	Team Leader	E5
323650	203	04	Team Leader	E5
323656	203	05	Volunteer	E4

DRAFT

323657	203	05	Volunteer	E4
323658	203	05	Volunteer	E4
323659	203	05	Volunteer	E4
323660	203	05	Volunteer	E4
323661	203	05	Volunteer	E4
323662	203	05	Volunteer	E4
323663	203	05	Volunteer	E4
Co E, Third Platoon:				
323674	204	01	Platoon Leader	O2
323675	204	02	Platoon Sgt	E7
323676	204	03	Squad Leader	E6
323677	204	03	Squad Leader	E6
323679	204	04	Team Leader	E5
323680	204	04	Team Leader	E5
323681	204	04	Team Leader	E5
323682	204	04	Team Leader	E5
323685	204	05	Volunteer	E4
323686	204	05	Volunteer	E4
323687	204	05	Volunteer	E4
323688	204	05	Volunteer	E4
323689	204	05	Volunteer	E4
323690	204	05	Volunteer	E4
323691	204	05	Volunteer	E4
323692	204	05	Volunteer	E4

11. **SUPERSESSION.** THIS TABLE OF ORGANIZATION SUPERSEDES PREVIOUS ORGANIZATION PLAN AND IS EFFECTIVE IMMEDIATELY.

AUTHENTICATION FOR THE COMMANDER:

A handwritten signature in black ink, appearing to read 'Heather D. Welsh', is centered on the page.

2LT HEATHER D. WELSH
EXECUTIVE OFFICER
VIRGINIA DEFENSE FORCE
ECHO COMPANY, 23 BN
BLACKHORSE BRIGADE
23 NOV 2008

LIST OF ANNEXES

**SECURITY QUALIFICATION ANNEX
SEARCH & RESCUE QUALIFICATION ANNEX
COMMUNICATIONS ANNEX
SOLDIERS LOAD ANNEX
TRAINING DOCUMENTS (TRADOC)**

**QUICK REACTION FORCE
LESS THAN LETHAL FORCE
OPERATIONS SECURITY**

MODULE 1: BASIC COMMUNICATIONS

- BASIC SKILLS FOR A COMMUNICATOR
- BASIC SKILLS FOR A COMMUNICATOR MODULE

MODULE 2: HF/VHF & NVIS COMMUNICATION

- HF-VHF SYSTEMS
- HF COMMUNICATIONS
- VHF COMMUNICATIONS
- NVIS (NEAR VERTICAL INCIDENT SKYWAVE)

MANUALS:

**NATIONAL SEARCH AND RESCUE MANUAL VOLUME I: NATIONAL SEARCH AND
RESCUE SYSTEM, JOINT PUB 3-50
QUICK REACTION FORCE (JFLCCQRF/RRF Pamphlet)
FM 21-11 FIRST AID FOR SOLDIERS
FM 21-76 US ARMY SURVIVAL MANUAL**

**SECURITY QUALIFICATION ANNEX
ECHO COMPANY, 23D BATTALION, BLACKHORSE BRIGADE
VIRGINIA DEFENSE FORCE**

1. GENERAL: PURPOSE OF THIS ANNEX IS TO PRESCRIBE THE TRAINING AND SKILLS QUALIFICATION GUIDELINES FOR SECURITY TRAINING FOR ECHO COMPANY, 23D BN, BLACKHORSE BDE, VIRGINIA DEFENSE FORCE (VDF).

2. CONFORMITY: ALL VDF PERSONNEL REGULARLY ASSIGNED TO SECURITY DUTIES WILL COMPLY WITH THE PROVISIONS OF THIS ANNEX.

3. COMMAND AND CONTROL: TRAINING AND QUALIFICATION WILL BE ADMINISTERED BY THE COMPANY COMMANDER AND THE COMPANY 1SGT.

4. EXECUTION: VDF E/23 PERSONNEL WILL TRAIN TO STANDARD FOR ALL MISSION ESSENTIAL FORCE PROTECTION AND SECURITY TASKS. STANDARD WILL BE ESTABLISHED IN ACCORDANCE WITH BN, BDE AND DIV GUIDANCE.

5. MISSION AND TASKS:

A. MISSION: TO TRAIN E/23 SOLDIERS TO FUNCTION AS A QUICK REACTION FORCE TO CARRY OUT ASSIGNED SECURITY MISSIONS, AND TO EMPLOY LESS THAN LETHAL FORCE AT THE DIRECTION OF BN HQ IN ACCORDANCE WITH THE MISSION OF THE VDF.

B. TASKS:

(1) EVACUATION COORDINATION:

A) TRAFFIC CONTROL

(2) LESS THAN LETHAL FORCE TRAINING:

- A) "USE OF FORCE" PYRAMID
- B) SELF DEFENSE TECHNIQUES
- C) RIOT BATON TRAINING

(3) SECURITY TRAINING:

- A) FORCE PROTECTION CONDITIONS (FPCON)
- B) GUARD DUTY
- C) OPERATIONS SECURITY
 - i. CHECK POINT PROCEDURES
 - ii. SECURITY ASSESSMENTS
 - iii. PATROLLING

6. CONCEPT OF TRAINING: EACH SOLDIER WILL RECEIVE STANDARDIZED PRACTICAL TRAINING AND RULES OF ENGAGEMENT (ROE) TRAINING FOR EACH TASK IN SECURITY AND LESS THAN LETHAL FORCE SKILLS. UPON COMPLETION OF TRAINING

EACH SOLDIER WILL QUALIFY FOR EACH SKILL. SOLDIERS WILL RE-QUALIFY ANNUALLY.

A. TRAINING: SOLDIERS WILL TRAIN UNDER THE GUIDANCE OF THE CO AND 1SGT FOR EACH TASK. SOLDIERS WILL TRAIN THROUGH PHYSICAL HANDS ON TRAINING, TRAINING MANUALS, AND SITUATIONAL TRAINING EXERCISES (STX). TRAINING WILL BE CONDUCTED ANNUALLY AT DRILLS. ADDITIONAL TRAINING EXERCISES MAY BE ADDED AT THE DISCRETION OF LEADERSHIP.

B. STANDARDS: THE TRAINING DOCUMENTS (TRADOC) STATE THE STANDARDS OF TRAINING AND QUALIFICATION CONSISTENT WITH THE VDF AND COMPANY MISSION, AND WILL INCLUDE A TRAINING MATRIX AND METRICS FOR EACH TASK. TRADOCs ALSO LIST SPECIFIC SKILLS FOR EACH TASK AND SPECIFIC GUIDELINES FOR TRAINING AND QUALIFICATION TESTING. GUIDELINES ARE FOUND IN THE FOLLOWING TRADOCs.

LESS THAN LETHAL FORCE (NLW TRADOC)
 GUARD DUTY (GUARD TRADOC)
 OPERATIONS SECURITY (OPSEC TRADOC)
 QUICK REACTION FORCE (QRF TRADOC)

C. QUALIFICATION: EACH TASK WILL HAVE A QUALIFICATION EXAMINATION (QUALS) TO CERTIFY SOLDIERS PROFICIENCY. EACH QUAL WILL HAVE BOTH A PRACTICAL EXAMINATION AND A WRITTEN EXAM. THE PRACTICAL EXAMINATION FOR SOLDIERS QUALIFIED TO CARRY AND USE LESS THAN LETHAL FORCE EQUIPMENT WILL INCLUDE BEING ON THE RECEIVING END OF EACH SKILL DURING TRAINING. SOLDIERS QUALIFIED TO CARRY THE PR-24 WILL ACT AS THE OPPOSING FORCE (OPFOR) DURING TRAINING AT LEAST ONCE. TRAINING RECORDS WILL BE MAINTAINED AS PART OF SOLDIERS' PERSONNEL FILES. SOLDIERS WHO DO NOT QUALIFY ON LESS THAN LETHAL FORCE TASKS ARE NOT AUTHORIZED TO CARRY OR USE LESS THAN LETHAL FORCE EQUIPMENT.

7. REQUIREMENTS:

A. EQUIPMENT: EACH TASK WILL HAVE TASK ESSENTIAL EQUIPMENT LISTED FOR EACH TASK. UNLESS ADVISED OTHERWISE BY BN HQ, E/23 SOLDIERS WILL PROVIDE ALL EQUIPMENT.

B. PHYSICAL REQUIREMENTS: ALL SOLDIERS ASSIGNED TO SECURITY TASKS ARE REQUIRED TO BE PHYSICALLY FIT TO PERFORM SECURITY DUTIES. FITNESS STANDARDS INCLUDE:

- 1) WALK/RUN TWO MILES IN 25 MINUTES
- 2) LIFT 40% OF BODY WEIGHT
- 3) PERFORM 50 SIT-UPS/CRUNCHES IN 2 MIN

END ANNEX

**SEARCH AND RESCUE ANNEX
ECHO COMPANY, 23D BATTALION, BLACKHORSE BRIGADE
VIRGINIA DEFENSE FORCE**

1. GENERAL: PURPOSE OF THIS ANNEX IS TO PRESCRIBE THE TRAINING AND SKILLS QUALIFICATION GUIDELINES FOR SEARCH AND RESCUE (S&R) TRAINING FOR ECHO COMPANY, 23D BN, BLACKHORSE BDE, VIRGINIA DEFENSE FORCE (VDF).

2. CONFORMITY: ALL VDF PERSONNEL REGULARLY ASSIGNED TO S&R DUTIES WILL COMPLY WITH THE PROVISIONS OF THIS ANNEX.

3. COMMAND AND CONTROL: TRAINING AND QUALIFICATION WILL BE ADMINISTERED BY THE COMPANY COMMANDER AND THE COMPANY 1SGT.

4. EXECUTION: VDF E/23T PERSONNEL WILL TRAIN TO STANDARD FOR ALL MISSION ESSENTIAL SEARCH AND RESCUE TASKS. STANDARD WILL BE ESTABLISHED IN ACCORDANCE WITH BN, BDE AND DIV GUIDANCE TO INCLUDE FEMA NIMS STANDARDS.

5. MISSION AND TASKS:

A. MISSION: TO TRAIN E/23 SOLDIERS TO FUNCTION AS SEARCH AND RESCUE PERSONNEL AND SEARCH SUPPORT PERSONNEL AT THE DIRECTION OF BN HQ IN ACCORDANCE WITH THE MISSION OF THE VDF.

B. TASKS:

(1)SEARCH AND RESCUE TEAM

- A) BASIC WILDERNESS SURVIVAL**
- B) BASIC LAND NAVIGATION & GPS**
- C) TRACKING & SITE INTEGRITY**
- D) SEARCH TECHNIQUES**

(2)SEARCH AND RESCUE SUPPORT TEAM

- A) SEARCH PLANNING**
- B) COMMAND POST PROCEDURES**
- C) ICS COMMAND SYSTEMS**

6. CONCEPT OF TRAINING: EACH SOLDIER WILL RECEIVE STANDARDIZED PRACTICAL TRAINING FOR EACH TASK IN S&R AND S&R SUPPORT BASED ON ASSIGNMENTS. UPON COMPLETION OF TRAINING EACH SOLDIER WILL QUALIFY FOR EACH SKILL. SOLDIERS WILL RE-QUALIFY ANNUALLY.

A. TRAINING: SOLDIERS WILL TRAIN UNDER THE GUIDANCE OF THE CO AND 1SGT FOR EACH TASK. SOLDIERS WILL TRAIN THROUGH PHYSICAL HANDS ON

TRAINING, TRAINING MANUALS AND COURSES, AND SITUATIONAL TRAINING EXERCISES (STX). TRAINING WILL BE CONDUCTED ANNUALLY AT DRILLS. ADDITIONAL TRAINING EXERCISES MAY BE ADDED AT THE DISCRETION OF LEADERSHIP.

B. STANDARDS: THE TRAINING DOCUMENTS (TRADOC) STATE THE STANDARDS OF TRAINING AND QUALIFICATION CONSISTENT WITH THE VDF AND COMPANY MISSION, AND WILL INCLUDE A TRAINING MATRIX AND METRICS FOR EACH TASK. TRADOCs ALSO LIST SPECIFIC SKILLS FOR EACH TASK AND SPECIFIC GUIDELINES FOR TRAINING AND QUALIFICATION TESTING. GUIDELINES ARE FOUND IN THE FOLLOWING TRADOCs.

SEARCH AND RESCUE

NATIONAL SEARCH AND RESCUE MANUAL VOLUME I: NATIONAL SEARCH AND RESCUE SYSTEM, JOINT PUB 3-50

BASIC FIRST AID

FM 21-11 FIRST AID FOR SOLDIERS

FIELD SURVIVAL

FM 21-76 US ARMY SURVIVAL MANUAL

C. QUALIFICATION: EACH TASK WILL HAVE A QUALIFICATION EXAMINATION (QUALS) TO CERTIFY SOLDIERS PROFICIENCY. EACH QUAL WILL HAVE BOTH A PRACTICAL EXAMINATION AND A WRITTEN EXAM. ONLY SOLDIERS QUALIFIED FOR S&R ARE ELIGIBLE FOR DEPLOYMENT TO THE FIELD. TRAINING RECORDS WILL BE MAINTAINED AS PART OF SOLDIERS' PERSONNEL FILES.

7. REQUIREMENTS:

- A) **EQUIPMENT:** EACH TASK WILL HAVE TASK ESSENTIAL EQUIPMENT LISTED FOR EACH TASK. UNLESS ADVISED OTHERWISE BY BN HQ, E/23 SOLDIERS WILL PROVIDE ALL EQUIPMENT.

- B) **PHYSICAL REQUIREMENTS:** ALL SOLDIERS ASSIGNED TO SEARCH AND RESCUE FIELD TASKS ARE REQUIRED TO BE PHYSICALLY FIT TO PERFORM SEARCH DUTIES. FITNESS STANDARDS INCLUDE:
 - 4) WALK/RUN TWO MILES IN 25 MINUTES
 - 5) LIFT 40% OF BODY WEIGHT
 - 6) PERFORM 50 SIT-UPS/CRUNCHES IN 2 MIN

END ANNEX

**COMMUNICATIONS ANNEX
ECHO COMPANY, 23D BATTALION, BLACKHORSE BRIGADE
VIRGINIA DEFENSE FORCE**

1. **GENERAL:** PURPOSE OF THIS ANNEX IS TO PRESCRIBE THE TRAINING AND SKILLS QUALIFICATION GUIDELINES FOR COMMUNICATIONS TRAINING FOR ECHO COMPANY, 23D BN, BLACKHORSE BDE, VIRGINIA DEFENSE FORCE (VDF).

2. **CONFORMITY:** ALL VDF PERSONNEL REGULARLY ASSIGNED TO E/23 WILL COMPLY WITH THE PROVISIONS OF THIS ANNEX.

3. **COMMAND AND CONTROL:** TRAINING AND QUALIFICATION WILL BE ADMINISTERED BY THE COMPANY COMMANDER AND THE COMPANY 1SGT.

4. **EXECUTION:** VDF E/23T PERSONNEL WILL TRAIN TO STANDARD FOR ALL MISSION ESSENTIAL COMMUNICATIONS AND SUPPORT TASKS. STANDARD OPERATING PROCEDURES ARE ESTABLISHED IN ACCORDANCE WITH BN, BDE AND DIV GUIDANCE.

5. **MISSION AND TASKS:**

A. MISSION: TO TRAIN E/23 SOLDIERS TO FUNCTION AS COMMUNICATIONS PERSONNEL AND COMMUNICATIONS SUPPORT PERSONNEL AT THE DIRECTION OF BN HQ IN ACCORDANCE WITH THE MISSION OF THE VDF.

B. TASKS:

(1) MCP TEAMS

A) RADIO COMMUNICATIONS

- 1) RADIO PROCEDURES (HAM/VDF)
- 2) RADIO EQUIPMENT (VHF/HF)
- 3) COMMUNICATIONS LOGS

B) OPERATIONS

- 1) DEPLOYMENT & ESTABLISHMENT
- 2) STATUS BOARD & OPERATIONAL MAPPING
- 3) REPORTING

(2) COMPANY COMMUNICATIONS

A) RADIO COMMUNICATIONS

- 1) RADIO PROCEDURES (VDF)
- 2) RADIO EQUIPMENT (FRS)

B) OPERATIONS

- 1) DEPLOYMENT & ESTABLISHMENT
- 2) STATUS BOARD AND OPERATIONAL MAPPING

3) REPORTING

(3) BN COMMUNICATIONS**A) RADIO COMMUNICATIONS**

- 1) RADIO PROCEDURES (VDF)
- 2) RADIO EQUIPMENT (MURS)

B) OPERATIONS

- 1) DEPLOYMENT & ESTABLISHMENT
- 2) STATUS BOARD AND OPERATIONAL MAPPING
- 3) REPORTING

6. CONCEPT OF TRAINING: EACH SOLDIER WILL RECEIVE STANDARDIZED PRACTICAL TRAINING FOR EACH TASK IN COMMUNICATION AND SUPPORT. UPON COMPLETION OF TRAINING EACH SOLDIER WILL QUALIFY FOR EACH SKILL. SOLDIERS WILL RE-QUALIFY EVERY TWO YEARS.

A. TRAINING: SOLDIERS WILL TRAIN UNDER THE GUIDANCE OF THE CO AND 1SGT FOR EACH TASK. SOLDIERS WILL TRAIN THROUGH PHYSICAL HANDS ON TRAINING, TRAINING MANUALS, TRAINING COURSES, AND SITUATIONAL TRAINING EXERCISES (STX). TRAINING WILL BE CONDUCTED ANNUALLY AT DRILLS. ADDITIONAL TRAINING EXERCISES MAY BE ADDED AT THE DISCRETION OF LEADERSHIP.

B. STANDARDS: E/23 SOLDIERS WILL TRAIN USING STANDARD OPERATING PROCEDURE (SOP) FOR COMMUNICATIONS. THE TRAINING DOCUMENTS (TRADOC) STATE THE STANDARDS OF TRAINING AND QUALIFICATION CONSISTENT WITH THE VDF AND COMPANY MISSION. GUIDELINES ARE FOUND IN THE FOLLOWING TRADOCs.

MODULE 1: BASIC COMMUNICATIONS:

- BASIC SKILLS FOR A COMMUNICATOR
- BASIC SKILLS FOR A COMMUNICATOR MODULE

MODULE 2: HF/VHF & NVIS COMMUNICATION

- HF-VHF SYSTEMS
- HF COMMUNICATIONS
- VHF COMMUNICATIONS
- NVIS (NEAR VERTICAL INCIDENT SKYWAVE)

C. QUALIFICATION: E/23 COM SOLDIERS WILL TEST ON THE MODULE ONE AND MODULE 2 OF BASIC COMMUNICATION CERTIFICATION CREATED BY THE LAFAYETTE BRIGADE. ONLY SOLDIERS QUALIFIED ON COM ARE DESIGNATED AS PRIMARY RTO FOR DEPLOYMENT TO THE FIELD. TRAINING RECORDS WILL BE MAINTAINED AS PART OF SOLDIERS' PERSONNEL FILES.

7. REQUIREMENTS:

A. EQUIPMENT: EACH TASK WILL HAVE TASK ESSENTIAL EQUIPMENT LISTED FOR EACH TASK. FRS RADIO EQUIPMENT WILL BE PROVIDED BY E/2. MURS, VHF OR CB RADIO COMMUNICATIONS EQUIPMENT WILL BE ASSIGNED BY HHQ.

B. PHYSICAL REQUIREMENTS: ALL SOLDIERS ASSIGNED TO COMMUNICATIONS TASKS ARE REQUIRED TO BE PHYSICALLY FIT TO PERFORM SUPPORT DUTIES. FITNESS STANDARDS INCLUDE:

1. BE CAPABLE OF SITTING OR STANDING FOR 2 HR SHIFTS
2. BE ABLE TO LIFT 20% OF BODY WEIGHT
3. BE ABLE TO HEAR AND DISTINGUISH RADIO TRANSMISSIONS AT MODERATE VOLUME

END ANNEX

**MEDICAL QUALIFICATION ANNEX
ECHO COMPANY, 23D BATTALION, BLACKHORSE BRIGADE
VIRGINIA DEFENSE FORCE**

1. GENERAL: PURPOSE OF THIS ANNEX IS TO PRESCRIBE THE TRAINING AND SKILLS QUALIFICATION GUIDELINES FOR MEDICAL TRAINING FOR ECHO COMPANY, 23D BN, BLACKHORSE BDE, VIRGINIA DEFENSE FORCE (VDF).

2. CONFORMITY: ALL VDF PERSONNEL REGULARLY ASSIGNED TO MEDICAL DUTIES WILL COMPLY WITH THE PROVISIONS OF THIS ANNEX.

3. COMMAND AND CONTROL: TRAINING AND QUALIFICATION WILL BE ADMINISTERED BY THE COMPANY COMMANDER AND THE COMPANY 1SGT.

4. EXECUTION: VDF E/23 PERSONNEL WILL TRAIN TO STANDARD FOR ALL MISSION ESSENTIAL MEDICAL TASKS. STANDARD WILL BE ESTABLISHED IN ACCORDANCE WITH BN, BDE AND DIV GUIDANCE TO INCLUDE RED CROSS STANDARDS.

5. MISSION AND TASKS:

A. MISSION: TO TRAIN E/23 SOLDIERS TO PROVIDE BASIC FIRST AND MEDICAL TRIAGE AT THE DIRECTION OF BN HQ IN ACCORDANCE WITH THE MISSION OF THE VDF.

B. TASKS:

(1) BASIC FIRST AID

- A)
- B)
- C)
- D)

(2) MEDICAL TRIAGE

- A)
- B)
- C)

(3) MEDICAL SCREENING

- A) PREDEPLOYMENT SCREENING
- B) POST DEPLOYMENT MEDICAL CHECK
- C) MEDICAL CARD PROCESSING

6. CONCEPT OF TRAINING: EACH SOLDIER WILL RECEIVE STANDARDIZED PRACTICAL TRAINING FOR EACH TASK IN FIRST AID BASED ON ASSIGNMENTS. UPON

COMPLETION OF TRAINING EACH SOLDIER WILL QUALIFY FOR EACH SKILL. SOLDIERS WILL RE-QUALIFY ANNUALLY.

A. TRAINING: SOLDIERS WILL TRAIN UNDER THE GUIDANCE OF THE CO AND 1SGT FOR EACH TASK. SOLDIERS WILL TRAIN THROUGH PHYSICAL HANDS ON TRAINING, TRAINING MANUALS AND COURSES, AND SITUATIONAL TRAINING EXERCISES (STX). TRAINING WILL BE CONDUCTED ANNUALLY AT DRILLS. ADDITIONAL TRAINING EXERCISES MAY BE ADDED AT THE DISCRETION OF LEADERSHIP.

B. STANDARDS: THE TRAINING DOCUMENTS (TRADOC) STATE THE STANDARDS OF TRAINING AND QUALIFICATION CONSISTENT WITH THE VDF AND COMPANY MISSION, AND WILL INCLUDE A TRAINING MATRIX AND METRICS FOR EACH TASK. TRADOCs ALSO LIST SPECIFIC SKILLS FOR EACH TASK AND SPECIFIC GUIDELINES FOR TRAINING AND QUALIFICATION TESTING. GUIDELINES ARE FOUND IN THE FOLLOWING TRADOCs.

**BASIC FIRST AID
FM 21-11 FIRST AID FOR SOLDIERS**

C. QUALIFICATION: EACH TASK WILL HAVE A QUALIFICATION EXAMINATION (QUALS) TO CERTIFY SOLDIERS PROFICIENCY. EACH QUAL WILL HAVE BOTH A PRACTICAL EXAMINATION AND A WRITTEN EXAM. ONLY SOLDIERS QUALIFIED IN FIRST AID ARE ELIGIBLE FOR DEPLOYMENT TO THE FIELD AS MEDICS. TRAINING RECORDS WILL BE MAINTAINED AS PART OF SOLDIERS' PERSONNEL FILES.

7. REQUIREMENTS:

- C) **EQUIPMENT:** EACH TASK WILL HAVE TASK ESSENTIAL EQUIPMENT LISTED FOR EACH TASK. UNLESS ADVISED OTHERWISE BY BN HQ, E/23 SOLDIERS WILL PROVIDE ALL EQUIPMENT.
- D) **PHYSICAL REQUIREMENTS:** ALL SOLDIERS ASSIGNED TO SEARCH AND RESCUE FIELD TASKS ARE REQUIRED TO BE PHYSICALLY FIT TO PERFORM SEARCH DUTIES. FITNESS STANDARDS INCLUDE:
- 7) WALK/RUN TWO MILES IN 25 MINUTES
 - 8) LIFT 20% OF BODY WEIGHT
 - 9) PERFORM 40 SIT-UPS/CRUNCHES IN 2 MIN

END ANNEX

**SOLDIER'S LOAD ANNEX
ECHO COMPANY, 23D BATTALION, BLACKHORSE BRIGADE
VIRGINIA DEFENSE FORCE**

(AWAITING REVISION FROM E/23 1SG)

CLOTHING AND EQUIPMENT	AUTH ALW	1	2	3	4	5	6	7	8	9	10	11	12
<u>LBE/LBV GEAR</u>													
Activation papers	1												
Bandana, OD or Woodland	1												
Batteries, for Flashlight	4												
Butt Pack, OD	1												
Canteen Cover OD	2												
Canteen, 1 Qt/Camelbak	2												
Case, Compass	1												
Case, First-Aid	1												
Compass	1												
Drivers License (or Govt. Photo ID)	1												
Duct tape	1												
Flashlight, Military	1												
Gloves, latex or vinyl	2												
Gloves, Leather pair (OD or Black)	1												
ID Tags (dog tags)	1												
Insect repellent	1												
Knife, 4-5" w/sheath	1												
Knife, Folding	1												
Leatherman or Gerber Multitool	1												
Light sticks	2												
Load Bearing Equipment LBE, OD	1												
Matches (Waterproof) or lighter	1												
MREs or equivalent	6												
Notebook Small 3"x5"	2												
Pen	2												
Pencil	2												
Pistol Belt, OD	1												
Poncho (OD or Woodland)	1												
Sewing kit	1												
Sunscreen	1												
VDF Photo ID	1												
Watch	1												
Whistle w/Lanyard (OD)	1												
Yearly orders	1												

